

# Correllian Herald

Est. 2007

Correllian Herald June 2022

Issued on first Monday of the month

## Litha Project

### Crafting with Bella

---

For the Litha ornament, you will need

- 1 clear ball
- white clay to make the foundation
- sand from the beach
- small shells from the beach
- small bendable branches to form a sun wheel

This is how it looks.



## Festival Recipes for June

By Bella

### Savoury Snack Wraps for Litha

Source: <https://www.learnreligions.com> - written by Patti Wigington

#### INGREDIENTS:

- 10 flour tortillas
- 1 package cream cheese, softened
- 1 Tbs. fresh dill
- 1 garlic clove, minced
- 1 C. shredded lettuce
- 1 C. shredded carrots
- 1 C. diced tomato
- 1 lb. chicken breast, cooked and diced
- 2 C. your favorite cheese, shredded

#### Preparation:

Mix the dill and garlic into the cream cheese and stir until blended.

Spread the cream cheese mixture evenly onto the tortillas. In layers, add the lettuce, carrots, tomato and chicken breast. Top with cheese.

To roll the tortillas up, fold the bottom of the tortilla up, and then fold in from one side. Use a toothpick to keep it from unrolling, and chill for an hour or so before serving.



## Butternut Squash Veggie Pizza for Yule

Source: <https://minimalistbaker.com>

### INGREDIENTS:

#### Sauce

- 3 cups butternut squash (cubed)
- 3 cloves garlic (whole / skin removed)
- 2 Tbsp olive oil (divided)
- 1 pinch sea salt + black pepper
- 1 Tbsp maple syrup

#### Pizza

- 1 1/2 cups broccolini (chopped / large stems removed)
- 1/2 cup red onion (chopped)
- 1/2 cup cooked chickpeas (rinsed and thoroughly dried)
- 1 pinch sea salt + black pepper
- 1 tsp dried oregano
- 6 ounces store-bought pizza dough
- 1 cup Butternut Squash Sauce (recipe above)
- 1/2 cup parmesan cheese or mozzarella cheese



### Instructions

- Preheat oven to 400 degrees F (204 C) and position a rack in the middle of the oven.
- Add cubed butternut squash and peeled garlic cloves to a baking sheet and drizzle with half of the olive oil (1 Tbsp as original recipe is written //adjust if altering batch size) and a pinch each salt and pepper. Toss to combine.
- Bake for 15-20 minutes, or until all squash is fork tender.
- Transfer squash and garlic to a blender or food processor with remaining olive oil (1 Tbsp as original recipe is written / adjust if altering batch size) and maple syrup. Purée until creamy and smooth, adding more olive oil or a touch of water if it's too thick. The consistency should be creamy and spreadable (not pourable).
- Taste and adjust seasonings as needed. Set aside.
- Heat a large skillet over medium heat. Once hot, add 1 tsp oil, broccolini, onion, chickpeas (optional), salt and pepper, and oregano. Sauté for 2-3 minutes, stirring frequently. Set aside.
- Increase oven heat to 425 degrees F (218 C).
- Roll out pizza dough into an even circle and transfer to a parchment-lined round baking sheet.
- Top with 1 cup sauce, veggies, and chickpeas. Sprinkle on a bit more oregano and parmesan cheese.
- Transfer pizza to the oven, laying the pizza and parchment paper directly on oven rack (slide the baking sheet off so it can bake directly on the rack for a crispier crust). Bake for 13-18 minutes, or until crust edges are golden brown.
- Slice and serve with remaining parmesan cheese, dried oregano, and red pepper flakes. Leftovers keep well for 2-3 days, though best when fresh.



## Correllians Around the World

By Lady Wolfciaara

in this series of articles, we are going to focus on a Correllian Member, and learn a little bit more about the said person. I do hope that this will shine a light to all of those, who are giving of themselves, to the Tradition.

This month, we are going to talk with **Gigi**, (her initiation name is Rhiannon), whose true full name is **Lady Dayana Verdú Bovio** (and she wanted to make it clear that "Lady" is her first legal name. Although it is a distinctive title, in her country it is a proper name. She lives in Guarenas, Miranda State – Venezuela. She is 40 years old, and has a daughter, Donatella, who is her North. Her family are the people who are always there to support her, who remind her why she is on this path, and who help her overcome obstacles. Of course, her cats, Rowina, and Cervecita, are the best guides and guards that she has. Her mother is a charming animal witch who has Italian Stregheria ancestry. Her great-grandmother was Streggha, and that's where her basic knowledge, and the first approach she had to magic came from.

She has always been attracted to spiritual paths since she was a child, and she has sought to approach the mysteries which are not understandable to the logical mind. From the age of 8, she learned to have lucid dreams and she always worked her spells in the dream field. Personally, she thinks that she is constantly changing. She considers that she is quite empathetic but it bores her too much to always be in one place, or to do only one thing. This is what brought her here, the fact of not wanting to always do the same thing, and not accepting that others tell her what to do as if there were no other options. She is very restless and curious. She kiddingly says she is a clown by vocation because she likes to make others laugh.

Wicca and paganism, in general, make her feel fulfilled because she believes that she can find the answers to everything. Being close to nature, and rediscovering herself is the most satisfying thing she has ever experienced which is what keeps her on this path. For her, that is the most powerful magic and everything she can do to maintain that magic is what interests her. Transmitting her knowledge to others and sharing the beauty found in nature with those she loves are her true interests.

When asked if she has a favorite divination tool, she says this is something that sometimes surprises her acquaintances because they do not understand how a witch does not like divination arts. However, she really enjoys living day by day with surprises. She thinks that trying to know what is going to happen every day takes away the excitement of life's adventure. She is very good at divination with the crystal ball, and mirrors. She also masters the pendulum and tarot, but she really tries to avoid divination tools as much as possible. She is generally guided by intuition, and she is seldom wrong.

She started in the Wicca Raiwondhra tradition, and then in the Reclaimig tradition, and thanks to mutual friends from both traditions, she met the one who was her Wicca mentor Correlliana Principe Therión de Fira. She has been with the Tradition for 7 years, starting in 2014, but she has studied Wicca for 21 years. Currently, she holds a First Degree, but she is continuing her training with second degree. The temple she belonged to is the Temple of Land of Grace, where she did her first degree studies, and had her initiation

with Therion, Aquarius 15/2015. She is also a Second Degree Dedicator at the Inverness Forest Temple, and since April of last year (2021 BC), she is the founder and director of the Sanctuary La Rueda de Plata. She is also a member and Co-Guardian of the Order of Dionysus. She is certified in Psicotarot, harmonization therapy for spaces and people, and numerology. She also does oracle readings, and heals with chromotherapy and aromatherapy in a self-taught way.



We thank **Gigi** for her time to answer our questions for us. Hoping for continued blessings for her on the Wicca-path of the Correllian Tradition that she is leading.

## Firefay's Gemstone Corner: Carnelian Stone

By Rev Firefay



Carnelian is a beautiful variety of calcedony stone that comes in many shades of red and orange due to its high iron content. It is an excellent stone to represent either the base chakra or the sacral chakra. Its element is fire, and the stone represents vitality, self-confidence, joy and rebirth. This is a happy stone that is great for anyone wishing to put more joy and warmth in their life.

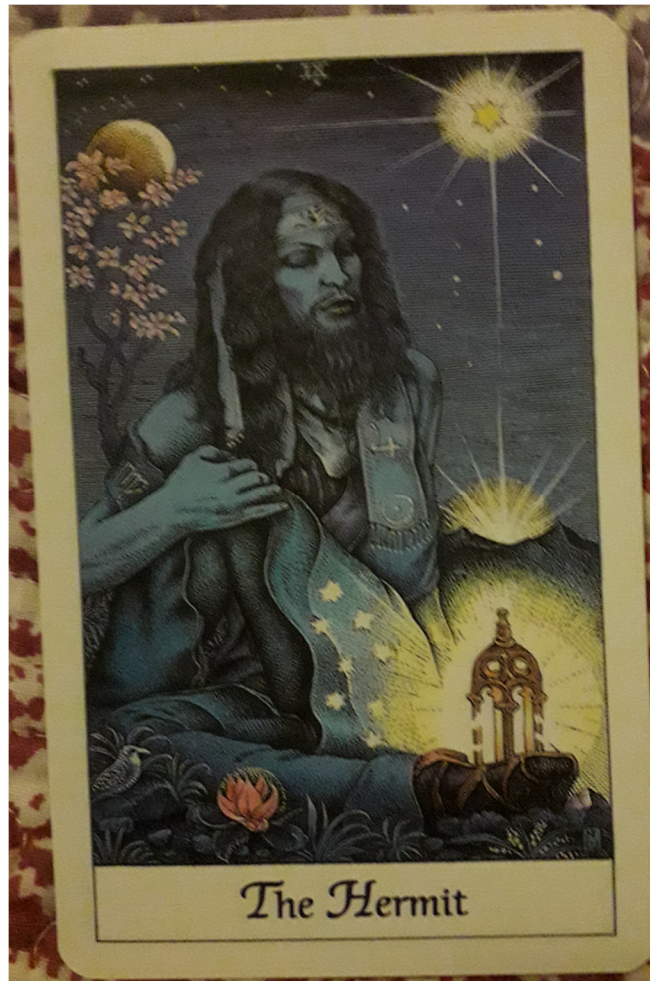
When used for healing you could guess that this is a good stone for depression, and you would be right since it helps evacuate negative feelings and can help with motivation and a positive outlook. It is also great for joint pains including arthritis. It helps heal bones and ligaments as well as ensure a better quality of blood flow to the various tissues of the body. Carnelian has been known to give confidence and help timid people to speak out. It is a stabilizing stone that stabilizes both blood pressure and blood sugar. It also purifies the heart, lungs, blood, and liver. Carnelian can be worn for infertility problems to stimulate fertility.

Carnelian can stimulate creativity and intelligence as well as ameliorate your memory. This stone can help connect the spiritual and physical body to help you find your purpose in life. It can also help you keep your emotions balanced.

To properly care for your Carnelian, cleanse it in warm soapy water then dry it thoroughly. Do not expose it to extreme temperature changes nor boiling water or steam. Keep it away from chemicals and cleanse it with sunlight, moonlight, visualization, smudging, contact with the Earth or any other cleansing method if it's not steam, boiling water or chemicals.

## Tarot of the Month

by Lady WolfCiara



### IX – The Hermit

Seclusion, solitude, wisdom, cleverness, distance, discernment, guidelines, self-control, discipline, awareness, autonomy, reliability, alienation, and loneliness.

### Prediction for June 2022

For the coming month, we will experience much alone-time and with it, it is sometimes hard to grow and become who you always wanted to be. Much wisdom will be learned and one can start believing in oneself again. It will happen with a lot of internal journeys so you can experience the journey in the real World, too.

### Tarotdeck

Cosmic Tarot by Norbert Lösche

## Rune of the Month

by Lady WolfCiara



### R – Raidu - Thor's Rune - wolf Rune - LIABILITY

Travel and movements; journey within; mental/physical travels; right actions and choices; the travel rune; if protected by this, you get to see much in life; need not be traveling around the world, may be journey within, too; shows that we are on the right path in life.

### Prediction for June 2022

For the coming month, we are going to travel, both within and without. One is making a major change for oneself, and it comes with some tensions. However, it will reveal oneself to the purest and finest appearance.





## The Order of Divination Runes

This month the Order of Divination is giving you the opportunity to practice and hone your divining skills! Here is a three rune spread for you to interpret for either yourself or a querent of your choosing. What are your thoughts, feelings and interpretation of these runes?



Thank you to all those who wrote in with their thoughts and interpretations please do let us know if you would like to have them published in the next edition of the Correllian Herald.

If any of you would like to write in with your interpretations of this three rune spread and have it published in the next edition of the Correllian Herald, or wish to have a spread with your own form of divination featured then please send them to – [heraldeditor@gmail.com](mailto:heraldeditor@gmail.com)

What can you read from this? Please feel free to send in pictures of your own palms for us all to interpret and do write in and tell us what you interpret. We would love to publish anyone's readings if they so wish to.

Thank you to all those who wrote in with their thoughts and interpretations last month. Please do let us know if you would like to have them published in the next edition of the Correllian Herald. Or if you wish to tell us about a particular form of divination or spread, or tarot deck, or rune set or have your own interpretations featured then please send them to – [heraldeditor@gmail.com](mailto:heraldeditor@gmail.com)



## Spell of the Month

By Lady WolfCiara

### **Energy Renewal**

Source: Spells of Magic: <https://www.spellsofmagic.com/>

Let your energy and emotion drain into the earth to be cleansed and renewed.

#### Casting Instructions for 'Energy Renewal

You will need the following items for this spell: Three or more white candles.

Light your candles around you in a dark room, in any fashion. Sit in the centre of the area and clear your mind.

Take your energy and let it flow out of your body. Let it all out. Now let your emotion fall out of you, into the ground. Keep going until you feel emotionless.

Now, when all your energy and emotion is gone, allow the candles to bring you fresh energy. Enjoy the warmth of the flames. Bring the flames into you. As you do this, let each emotion return little by little. Afterward you should feel better emotionally and feel like you have new power.

You should feel reenergized. If not, then try again as you are most likely not doing it right. It is natural to experience a sexual feeling as your energy returns.



## Wolfcara's Wiccan World

By Lady WolfCiara

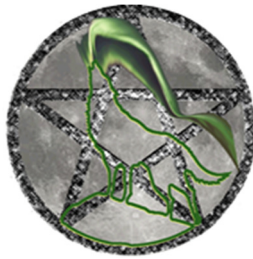
### **Merry meet my fellow Wiccans and Welcome to my little corner of the Wiccan World.**

Yet another month has passed by, and with a weekend of Lustration for the Correllian Tradition. I attended the ritual, on Sunday, and it was a lovely ritual. I was supposed to be involved in some initiation rituals and have a role in them although it didn't really turn out that way. I attended, but only as a spectator, and now that I have attended some rituals online, I'll know the ropes for the next time it is my turn to perform. I am a member of the group that is helping with organizing the different Degrees and Dedications initiation-rituals. It is a nice gesture, and hopefully it will help me to be more confident and get over my stage-fright. I am not comfortable with having the spotlight on me. The rituals I have attended are held in chat and I am a quarter caller. The routine is there, I just need to be more confident in myself and trust the feeling that says that I can do this, I truly can.

This month I have also started to study in a writing class that will finally help me get my book on paper. Yes, I am writing a book about a Wiccan woman in her fifties that gets to travel back to the 1200 period. The woman is called Nanna, and she meets up with a girl that is 20 years old and living and working in a brothel. Her name is Saga, and she is a prostitute. She has been there for 5 years, and Nanna meets her in her century. While out on a fieldtrip to Stockholm, and having dinner at a Restaurant during Litha, or Midsummer, when the Summer-solstice occurs, Nanna travels through time. I have not yet decided how it will happen though. Nanna and Saga will experience a magical day together. Yes, I do have another book, which is when Saga travels to Nanna's 2000 period. This is happening on Yule, with the Winter-solstice, and that will be a day to remember for Saga. To make it even more interesting, I have a third and final book about them, where they are exploring the world, and come to visit the pyramids, Stonehenge, and Macchu Picchu. Saga begins a new life in a new world for her, having been adopted by Nanna. Therefore, they have also begun a new life together. I have just started out with the first one, which is called "Wolf's light – Nanna's journey", and number two, is named: "Raven's light – Sagas journey, and the third one is called: "Bear's light – Nanna and Sagas journey". I am currently writing a little in all three books, as the flow is there, and I have so many threads to untangle until I'm finished with them.

Take care until next time. Blessed be all of you. Love and light,  
hugs and blessings.

WolfCiara



## Wolfie's Reading Corner

By Lady WolfCiara

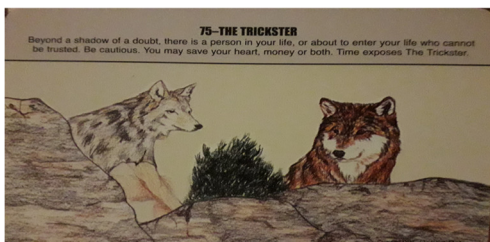
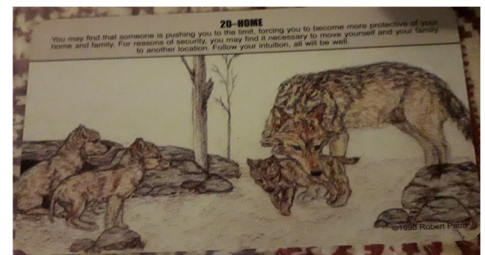
Welcome to the corner for readings and, hopefully, answers to a specific question, or just a reading to know what will be happening next month. The readings can be anonymous, and known only to the Herald Editor, and myself. To get your reading done, just send in an e-mail to the Herald Editor at this address: [heraldeditor@gmail.com](mailto:heraldeditor@gmail.com).

I am using a 3-card-spread, and either cards or Runes. You as a querent, has the opportunity to choose from which one you want me to use. The different ones, that I am using are: "The fairies oracle by Brian Froud", "Cosmic tarot by Norbert Löche", WolfPack Tarot by Robert Petro", "Runes", and "The Correllian Alphabet by Lord Don Lewis, (Cards made by Lady WolfCiara)", Do include if you want a past-present-future reading or, a specific question answered.

**Question asked is:** When will the war end and be over with in Ukraine?

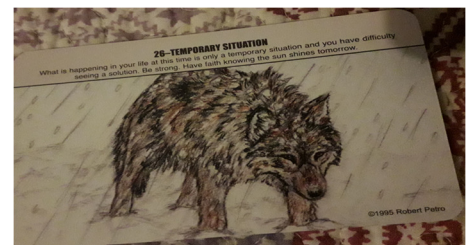
I am doing a 3-card-spread and using:" The WolfPack Tarot by Robert Petro".

**1<sup>st</sup>:** 20 – Home – You may find that someone is pushing you to the limit, forcing you to become more protective of your home and family. For reasons of security, you may find it necessary to move yourself and your family to another location. Follow your intuition, all will be well.



**2<sup>nd</sup>:** 75 – The trickster – Beyond a shadow of a doubt, there is one person in your life, or about to enter your life who cannot be trusted. Be cautious. You may save your heart, money, or both. Time exposes The Trickster.

**3<sup>rd</sup>:** 26 – Temporary situation – What is happening in your life currently, is only a temporary situation, and you have difficulty seeing a solution. Be strong. Have faith knowing the sun shines tomorrow.



### Conclusion, and prediction is:

The common people are experiencing tough times, and feel the need to relocate, to find better living conditions. The war is still going on, although there is an opening in it all. The world has been able to see who the villain is, and he will be recognized, and shall not be trusted. This is just a temporary matter, and one has trouble seeing beyond the war. Peace will come, and trust that the sun will always shine again.

Love and light, hugs and blessings. Take care until next time. Blessed be all of you. Wolfie

Correllian Herald June 2022



## The Temple of Contemplation Formal Shrine

The Temple of Contemplation is now offering a monthly “contemplation” for anyone and everyone who wishes to partake. At this time of the year, we tend to be thinking about the up and coming as well as long anticipated Summer months, but it is easy to forget that not everyone is celebrating Litha. Those of us in the Southern Hemisphere are busy preparing for Yule and settling in for the winter months. So we at the Temple of Contemplation have been thinking about what people in both hemispheres will be thinking about at this time of the year. From the excitement of summer plans to focusing on what can seem like long winter months, to looking back over the passing of the current wheel of the year are we all either looking forwards or looking back? As the continuing year carries on for us all, what is it that we are asking of ourselves? Or are we asking them of others? What is our focus at these times of the year? What is it that you particularly focus on during your plans and preparations for either the winter or summer months? Are there other issues or topics that you personally think about or resolve at this changing time of the year? If you wish to share your thoughts and contemplations with us and have them published in the next edition of the Correllian Herald, then please feel free to email them to – [heraldeditor@gmail.com](mailto:heraldeditor@gmail.com) - we would love to hear from you!

This might be the time of the calendrical new year that you are looking for something new or different to discover so why not become an official member of the Temple of Contemplation? To find out more information or to request to join the Temple of Contemplation please email [admin@correlliantradition.co.uk](mailto:admin@correlliantradition.co.uk)

Also, the Temple of Contemplation holds a monthly online Peace Ritual, as part of the Correllian Global Rolling Peace Prayer, on the second Wednesday of every month. All are welcome to attend to help us send out peace across the globe. The importance of our peace prayer has grown of late, and we continue to send out peace through the Correllian Global Rolling Peace Prayer as well as our monthly online Peace Prayer Ritual. All are welcome to attend and join in our quest for Peace. For more information please go here - [Peace Page \(correlliantradition.co.uk\)](http://correlliantradition.co.uk)

For more information about online rituals go to - [Temples Ritual \(correlliantradition.co.uk\)](http://correlliantradition.co.uk)  
New Year blessings to you all and happy contemplating!



## School of Reiki

The School of Reiki now has available places for new students to train in the art of Reiki **FREE OF CHARGE** at the online School - [School of Reiki Class Site](#) – you can sign up and start your training today and become a reiki Master! For more information visit the school website - [School of Reiki](#) – or email [admin@schoolofreiki.org](mailto:admin@schoolofreiki.org)

Once again, we give a huge welcome to all of our numerous new students from all of us at the School of Reiki. We hope you are settling in well and enjoying your studies and the new journey you are undertaking. Many of our completed students are now taking advantage of the amazing benefits of registering with the IPHM! We are an IPHM registered trainer and therefore our Students gain certain benefits from being able to register with them once they have completed their studies. To find out more please do contact us. We would also like to take this opportunity to send our congratulations to the students that have completed and passed their level 1 finals this month. Congratulations to Norman and good luck as you embark on your level 2 studies! Congratulations to all our Level 2 students starting their Level 3 studies. We wish you luck with your continued studies and your new ventures ahead of your Reiki studies. We now have more students registered with the IPHM than ever before and therefore more approved therapists and practitioners helping and supporting the Order of Reiki and the Distance Healing Network. So is now the right time for you to embark on a reiki journey and start training with the School of Reiki? Or maybe you wish to return to your reiki studies and go on to join the Order of Reiki. Or even become an approved therapist with the IPHM!

Blessings

The School of Reiki

Also just a quick reminder that the Order of Reiki holds an online Reiki Healing Session on the third Wednesday of every month [Reiki Rituals \(orderofreiki.org\)](#) and that all students (and our Reiki Teachers!) of the School of Reiki are welcome to attend, as well as members and non-members of the Correllian Order of Reiki. You do not need to be Reiki trained in order to participate. Feel free to come along and pop in and watch.

*The School of Reiki is registered as an IPHM Approved Training Provider*



INTERNATIONAL  
PRACTITIONERS OF  
HOLISTIC MEDICINE

Accredited Training  
Provider



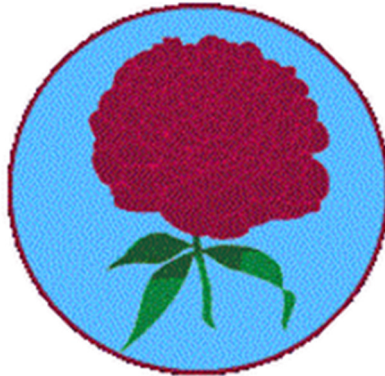
## Temple of the 8 Festivals Litha Word Search

O J O N C P T H E G R E E N M A N T T R E W W X  
 K T E A I O K C K M Y G M S J K U I S P J T X G  
 P Y G S K Y T O M E T W E W O D A E M A H O L N  
 I Y J E U G X Q T A M I I F H F X M Y O N E S F  
 J L A L L M G O N D S L X Z E I L O S I I N R B  
 L E E P U I O R A M E D F C P S M A U T Y X E F  
 G S D P J D Z Y L O S F E C N N T Q U P Z A W D  
 C S E A Q S M A C O O L R W N S E I U Z F W O T  
 M E V B W U Q D X N R O T D Y E E U V L Y G L R  
 A R Y O T M P I Z A N W I N X Q Y E A A J Z F I  
 U S Q X O M P L G U L E L U P M A H B J L T X Y  
 E A S A M E H O C O I R I L C A K M C X R B C G  
 R B N B M R W H L S I Z T K W R M X K U G K B M  
 Y B F G H Z C D J Q K B Y F A L G H E V M M R Z  
 K A A H R O E S U I N R J D W L T G V G H Z R E  
 M T U G X T N R E D N E V A L H E C I T S L O S  
 W H N G M M U E Z E S U M M E R D T I G I R B V  
 M B A X S V D V Y E I Q L O N G E S T E C V L S  
 F Y E R M X L W B G M E O I W S C Z A M V S Z C  
 H O H R F E A X E F N H I U U L E L S E H U L X  
 C K A B R M Y V J P F W S B I A M R J Y C N X Y  
 B T Y D S I J A M K P O D S M M B M Q U I R S Z  
 X M J F A Q E W I S P O H F Z F E O S B V Y U Z  
 S W V X A X K S B Y T C A D H U R F Y L L O H S

Lesser Sabbat	The Green Man	Wildflower	Dark half	Fertility	Mead Moon				
Midsummer	December	Festival	Lavender	Solstice	Berries	Equinox	Flowers		
Holiday	Longest	Apples	Brigit	Meadow	Summer	Fauna	Holly	Honey	Roses
		Bees	Yule	Oak	Sun				

## Identify the Sigil

The Correllian Tradition has many Temples, Shrines, Orders and Groups, but how many of them do you know or know any information about them? Each edition of the Correllian Herald shall feature a brief look at a particular Temple, Shrine, or Order, but first you need to identify which one is to be featured! Here is this month's sigil



Any idea which Temple, Order, Shrine or Group this belongs to? What do you know about this group? Find out in the next edition!

Well done to all you who got this one – the Order of Spiritual Advisers



The Order of Spiritual Advisers is made up of members of the High Priesthood who make themselves readily available to help others in the Correllian Tradition with Spiritual matters and provide advice and support.

If you have a Temple, Shrine, Order or Group and would like it to be featured here then please email [heraldeditor@gmail.com](mailto:heraldeditor@gmail.com) with your logo and brief overview to be featured in the following edition.





## **The Healing Temple Distance Healing Network**

Due to the demise and closure of the beloved Yahoo Groups, The Healing Temple Distance Healing Network is now having to start again from scratch. We have a brand new shiny io Group and we are currently seeking old members as well as new and additional healers to either join, or re-join, the Distance Healing Network to send out greatly required healing to those out there so desperately in need of healing energies.

You are more than welcome to participate in the weekly rituals if you so wish to. We receive many requests for healing on a weekly basis and would love more participation in sending that much needed healing out; even if it is just by joining our Distance Healing Network and sending out healing when you can. We hold a weekly online Healing Ritual EVERY Friday in the Temples Ritual Room - <http://www.chatzy.com/Temples-Ritual-Room> at 9pm GMT/BST UK Time - all are welcome to attend.

To join our Distance Healing Network please go to - [distancehealingnetwork@groups.io | Home](https://groups.io/join/distancehealingnetwork) –\_and request to join or email Lady Anna: [anna@thehealingtemple.org](mailto:anna@thehealingtemple.org)

To make requests for healing please go to - [Healing Request Form \(thehealingtemple.org\)](https://thehealingtemple.org/healing-request-form)

To join and become a full member of the Healing Temple please go here - [Temple Membership \(thehealingtemple.org\)](https://thehealingtemple.org/temple-membership)



### CALLING ALL BARDS!

The Order of Bards is looking for writers to feature their works in future editions of the Correllian Herald. So, if any members of the Order of Bards, or any budding writers in general would like to have their work, short stories, poems etc featured then please send your writings to – [bards@correlliantradition.co.uk](mailto:bards@correlliantradition.co.uk)  
**PLEASE NOTE:** All writings MUST be original, and you MUST be the author of any works submitted. We cannot publish any plagiarised or copyrighted works.

We have had a few people ask about book reviews and we hear at the Order of Bards think that is a great idea! So if anyone would like to submit a book review then please feel free to email in. And anyone who would like their own works published here then please do let us know.

Keep on writing and sending your written works in to [bards@correlliantradition.co.uk](mailto:bards@correlliantradition.co.uk)



### Temple of the 8 Festivals Yule Word Scramble

1. OTDSCNIROEA \_\_\_\_\_
2. RETE \_\_\_\_\_
3. OHYLL \_\_\_\_\_
4. DIWSOM \_\_\_\_\_
5. REGEN \_\_\_\_\_
6. IAUERCTFK \_\_\_\_\_
7. RDE \_\_\_\_\_
8. HET ERNEG MAN \_\_\_\_\_
9. NATROROESIT \_\_\_\_\_
10. HBTIERR \_\_\_\_\_
11. EALRNWE \_\_\_\_\_
12. GDLO \_\_\_\_\_
13. OKA GIKN \_\_\_\_\_
14. MLEDUL NIWE \_\_\_\_\_
15. TSLISOEC \_\_\_\_\_
16. INEDWRTIM \_\_\_\_\_
17. YIV \_\_\_\_\_
18. LLYOH NKGI \_\_\_\_\_
19. DRGENAIRBGE \_\_\_\_\_
20. ASBAPT \_\_\_\_\_
21. VSLEIAFT \_\_\_\_\_
22. NGEGGO \_\_\_\_\_
23. MNOCNNIA \_\_\_\_\_
24. UDIEEYTL \_\_\_\_\_
25. UYLE GOL \_\_\_\_\_

## UK Correllian Temples - Online Rituals June 2022



**The Healing Temple online Healing Ritual** - <http://thehealingtemple.org>

**Friday 3rd June** - 9pm BST UK time (4pm EDT/1pm PDT US time)

Online Ritual Room: <http://www.chatzy.com/Temples-Ritual-Room>



**The Temple of Isis online Egyptian Ritual** - <http://isis.houseofneteru.com/>

**Tuesday 7th June** - 9pm BST UK time (4pm EDT/1pm PDT US time)

Online Ritual Room: <http://www.chatzy.com/Temples-Ritual-Room>



**Temple of Contemplation online Peace Ritual** - <http://contemplation.correlliantradition.co.uk/>

**Wednesday 8th June** - 9pm BST UK time (4pm EDT/1pm PDT US time)

Online Ritual Room: <http://www.chatzy.com/Temples-Ritual-Room>



**The Healing Temple online Healing Ritual** - <http://thehealingtemple.org>

**Friday 10th June** - 9pm BST UK time (4pm EDT/1pm PDT US time)

Online Ritual Room: <http://www.chatzy.com/Temples-Ritual-Room>



**Temple of the Moon online Full Moon Esbat** - <http://darkmoonrising.co.uk/>

**Tuesday 14th June** - 9pm BST UK time (4pm EDT/1pm PDT US time)

Online Ritual Room: <http://www.chatzy.com/Temples-Ritual-Room>



**Order of Reiki online Reiki Healing Ritual** - <http://www.orderofreiki.org/>

**Wednesday 15th June** - 9pm BST UK time (4pm EDT/1pm PDT US time)

Online Ritual Room: <http://www.chatzy.com/Temples-Ritual-Room>



**The Healing Temple online Healing Ritual** - <http://thehealingtemple.org>

**Friday 17th June** - 9pm BST UK time (4pm EDT/1pm PDT US time)

Online Ritual Room: <http://www.chatzy.com/Temples-Ritual-Room>



**The Temple of the 8 Festivals online Litha Ritual** - <http://festivaltemple.co.uk/>

**Tuesday 21st June** - 9pm BST UK time (4pm EDT/1pm PDT US time)

Online Ritual Room: <http://www.chatzy.com/Temples-Ritual-Room>



**Temple of Gaia online Gaia Healing Rite** - <http://templeofgaia.co.uk/>

**Wednesday 22nd June**- 9pm BST UK time (4pm EDT/1pm PDT US time)

Online Ritual Room: <http://www.chatzy.com/Temples-Ritual-Room>



**The Healing Temple online Healing Ritual** - <http://thehealingtemple.org>

**Friday 24th June** - 9pm BST UK time (4pm EDT/1pm PDT US time)

Online Ritual Room: <http://www.chatzy.com/Temples-Ritual-Room>



**The Temple of Eternal Memorials online Memorial Ritual** - <http://www.eternalmemorials.org/>

**Monday 27th June** - 9pm BST UK time (4pm EDT/1pm PDT US time)

Online Ritual Room: <http://www.chatzy.com/Temples-Ritual-Room>



**Temple of the Moon online New Moon Esbat** - <http://darkmoonrising.co.uk/>

**Tuesday 28th June** - 9pm BST UK time (4pm EDT/1pm PDT US time)

Online Ritual Room: <http://www.chatzy.com/Temples-Ritual-Room>

**To sign up for the Temples mailing list to receive ritual reminders go here**

- [Mailing List \(correlliantradition.co.uk\)](http://www.correlliantradition.co.uk/MailingList)

**To find out more information about Online Rituals please go here**

- <http://templesritual.correlliantradition.co.uk/RitualInformation.html>

**All online rituals are sponsored by the Temple of Sedna and can be found on the Temples Calendar**

- <http://templesritual.correlliantradition.co.uk/TemplesCalendar.html>

Answers to last month's puzzles –

The Temple of the 8 Festivals Samhain Word Search

D K C F M A V D W V E T N Y J A V M O D S I W V  
A N O V E M B E R H W A O G D V S N T O B W P R  
E P N Z Z I Y L E U F C R A N M A A C Q S P X A  
D L Z R U A C U A C V K D P E S T T H P I R S Q  
E U I B E T N H C C D C L C L H X I X K Y H B K  
H S X G X T Y C A D K A U N U G I Q J H R L Y Z  
T M N W H F N G E L N L A Q I N I K P M U P J T  
F D O Q R T V A W S L B C J G F C S Q T G G R J  
O L I G Q V A T L Q T O E L D N A C F M T I J C  
T R T A N D I L N O G R W D B R V Y M G C D M C  
H O A U U I L P Q E K I Y E J O S I A K W D L M  
G W N T L Y D R E Z M C N J E C P K O M B V U L  
I R R U E E X I Z S K E A K T N M R O M N S L D  
N E A M A L H I U J L B V J S H T N L M L N T U  
W H C N V J S G A G S R A A K R J V G D C L J Q  
K T N A E R G V R M R A E Y E H T F O L E E H W  
O O I M S I I R N A O O X A J R Q F Y Q O G H M  
S O E N W P Y E C X N O T R H S E Q E D S W X G  
U P R P C G W N P C R D T J Q Y O B M A G W D Q  
L W I F B Y F G R A E V E S W O L L A H L L A Y  
R F D R E Q I Y N M O R M D E A D U L V I G F J  
B L Q A I R U G S K C R Y N Q Y R J F F K S G E  
H L R O M T E M W A P P L E B O B B I N G N B W  
K V P Q L Z S E T C P D Y Q Q N J L I D F I R E

All Hallows Eve    Ancestry    Apple Bobbing    Autumn    Bereavement    Black    Black Cat  
Candle    Cauldron    Corn    Dead    Fire    Flame    Grand    Guiding    Halloween  
Jack o Lantern    Leaves    Light    May    New Year    Night of the Dead    November    Orange  
Other World    Pumpkin    Reincarnation    Spirits    Trick or Treat    Vail    Wheel of the Year  
Wisdom

## The Temple of the 8 Festivals Beltane Word Scramble

1. NRGAD TAABSB Grand Sabbat
2. ASINGSTHADFN Handfastings
3. NEALLITBAN Bealltainn
4. ANITEEELBN Bealteinne
5. HCITSMANAE Cetsamhain
6. ERHDNO OGD Horned God
7. MYA AESKTB May Basket
8. BUCADENAN Abundance
9. IFALEREBS Balefires
10. BATAILENE Bealtaine
11. TELTYFIRI Fertility
12. ENREG AMN Green Man
13. HSNPEASIP Happiness
14. AMY EQEUN May Queen
15. OUNGY DOG Young God
16. EELITNAB Beltaine
17. SOBSMLOS Blossoms
18. ROSFEBIN Bonfires
19. SNGFTIEA Feasting
20. ISFLTEAV Festival
21. WOANHRTH Hawthorn
22. YMA HBSU May Bush
23. YAM PEOL May Pole
24. MYA NWIE May Wine
25. CNINGDA Dancing
26. WFRSOEL Flowers
27. OGDSDSE Goddess

## [Chartered Bodies of the Correllian Tradition](#)

**Witan Shrines** are the first level of the Temple-Making Process. Witan Shrines are created by Charter of the Tradition and may progress to Full Temple status over the course of several years or remain at Witan Shrine status indefinitely.

A list of current Witan Shrines may be found HERE: <http://correllian.weebly.com/witan-shrines.html>

**Proto-Temples** are groups which have progressed beyond the status of Shrines and are on their way to becoming Full Temples but have not yet achieved that status.

A list of current Proto-Temples may be found HERE: <http://correllian.weebly.com/proto-temple.html>

**Full Temples** of the Correllian Tradition have completed the Temple-Making Process and, if headed by a Third Degree, have representation on the Witan Council. A Full Temple can perform all of the functions of a Temple and may in some cases have multiple branches.

A list of current Temples may be found HERE: <http://correllian.weebly.com/temple.html>

**Formal Shrines** are Shrines that are dedicated to specific activities of a limited nature. Formal Shrines may exist as an aspect of a larger group or may stand alone in their own right.

A list of current Formal Shrines may be found HERE: <http://correllian.weebly.com/formal-shrines.html>

**Personal Shrines** are an aspect of an individual Correllian member's personal piety and are not bodies of the Tradition as such. Personal Shrines exist wholly at the discretion of the member, however the Tradition does acknowledge them upon request.

A list of current Personal Shrines may be found HERE: <http://correllian.weebly.com/personal-shrines.html>

**Orders** are associations within the Tradition dedicated to specific skills, tasks, or interests. This sort of Order is not to be confused with the Meritorious Orders which are awarded in recognition of service.

A list of current Orders may be found HERE: <http://correllian.weebly.com/orders.html>

**Houses of Contemplation** are established to facilitate the temporary or permanent practice of the contemplative religious life. Depending upon the rules of the specific House of Contemplation guests may come for spiritual retreats of designated length, or to pursue a life of permanent contemplation in the manner of a Monastery.

A list of current Houses of Contemplation may be found HERE: <http://correllian.weebly.com/houses-of-contemplation.html>

For information on how to start a Shrine, Order or Correllian Study Group or for an application form contact the Witan Herald: [witanherald@gmail.com](mailto:witanherald@gmail.com)



## Membership Groups

### **Outer Court Department**

<https://www.facebook.com/groups/265398186909862>

This is a social group for all the members of the Outer Court of the Correllian Tradition. Feel free to share, discuss, and enjoy with all our wonderful Correllian family around the Globe!

### **Correllian Membership Hub**

<https://www.facebook.com/groups/CorrellianMembershipGroups>

Correllian membership group for all Correllian members

### **Correllian Clergy**

<https://www.facebook.com/groups/CorrellianClergy>

Group for all members of Correllian Clergy

### **Witan Herald's Office**

<https://www.facebook.com/groups/WitanHeraldOffice>

This is where general membership and clergy may directly contact the Witan Herald

### **Correllian Herald - Newsletter**

[www.facebook.com/groups/correllianherald/](http://www.facebook.com/groups/correllianherald/)

Correllian Herald Publication Group. This group is for the distribution of the Correllian Herald Newsletter.

### **Correllian Prayers**

<https://www.facebook.com/groups/2112247592362824>

To provide a supportive venue where all Correllians, friends and family may post prayer requests.

### **Correllian Elder's Office**

<https://www.facebook.com/groups/133563646851853>

This Facebook group is for ALL TRADITION members to enter and submit a comment.

### **The Correllian Temples, Shines, Groups and Project Keepers**

<https://www.facebook.com/groups/1508370089410767>

The Correllian Temples, Shines, Groups and Project Keepers is a place for all Third Degrees, Second Degrees, First Degrees, Temple Heads, Shrine Heads, Group Heads, and Project Keepers. Purpose: is so that all groups can share open communication with each other. Giving each other support and encouragement. As well as hopefully, work on collective projects from time to time.

## Herald Adverts & Articles

Disclaimer: Any views expressed within any articles in this publication are not necessarily the views of the Correllian Tradition the Correllian Herald Publication or the Correllian Herald Editor and staff. Any groups advertised within the Herald, which are not part of or affiliated to the Tradition, are not endorsed by the Tradition.

### **Writers for June :**

Rev. Firefay - France

Rev. Bella - Denmark

Lady Wolfciara – Sweden

Lord Equinox Silvermoon - UK

Editor Lady Anna - UK

Send your adverts, articles and inclusions to: [heraldeditor@gmail.com](mailto:heraldeditor@gmail.com)

If you would like to write articles or be an online reporter for the Herald, please contact the Herald editor:  
[heraldeditor@gmail.com](mailto:heraldeditor@gmail.com)

The Correllian Herald is a monthly publication issued on the first Monday of the month. Next edition  
**Monday 4<sup>th</sup> July.**

© Correllian Herald Publications Established 2007